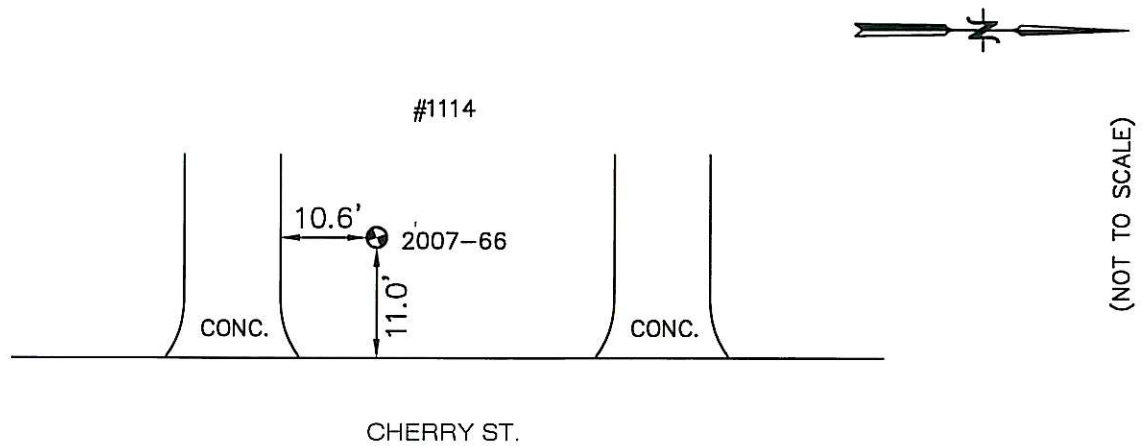


BENCH MARK VILLAGE OF DEERFIELD, IL

| | | | | |
|---|----------------------------|---------------------|-----------------------------|---|
| <u>LOCATION ADDRESS:</u> 1114 CHERRY STREET DEERFIELD, IL | <u>MONUMENT</u> 2007-66 | <u>DEPTH</u> 15' | <u>ELEVATION:</u> 660.18 | <u>NORTHING:</u> 2006074.19 <u>EASTING:</u> 1111304.29 |
|---|----------------------------|---------------------|-----------------------------|---|

DESCRIPTION

WEST SIDE OF CHERRY ST.
AT 1114 CHERRY STREET



COORDINATE INFORMATION:
HORIZONTAL COORDINATES ARE BASED ON IL STATE PLANE COORDINATES, EAST ZONE GRID AS ESTABLISHED BY GPS OBSERVATION. ELEVATIONS ARE BASED ON NAVD 88 OBTAINED BY DIFFERENTIAL LEVELING METHODS.



PREPARED BY:
Hampton, Lenzini, and Renwick Inc.
380 Shepard Drive
Elgin, Illinois 60123-7010
847-697-6700