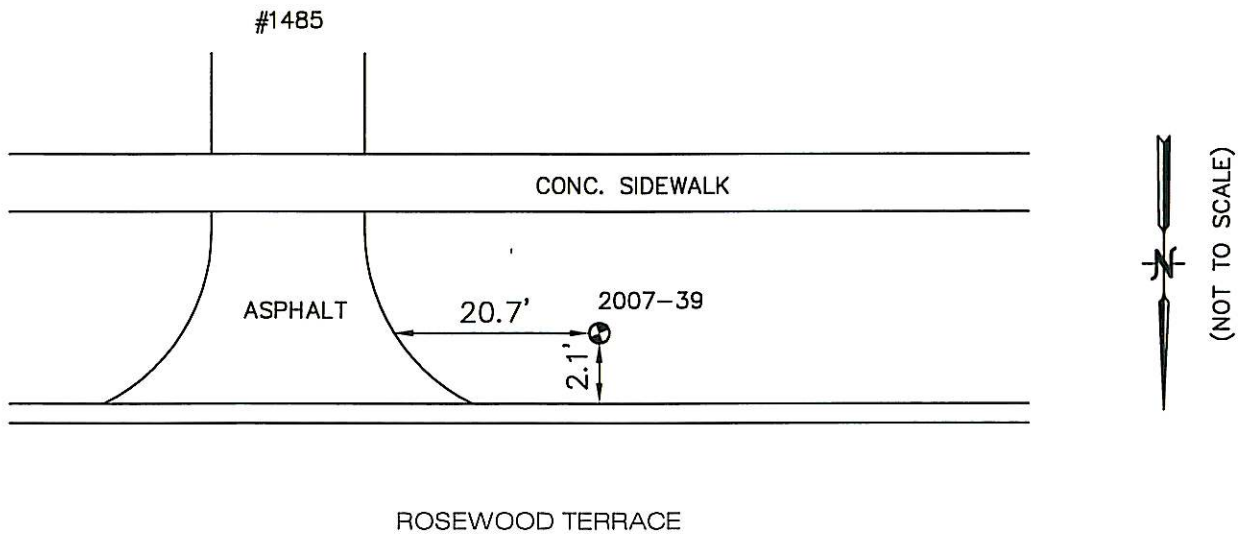


# BENCH MARK VILLAGE OF DEERFIELD, IL

<u>LOCATION ADDRESS:</u> 1485 ROSEWOOD AVE. DEERFIELD, IL	<u>MONUMENT</u> 2007-39	<u>DEPTH</u> 9'	<u>ELEVATION:</u> 672.16	<u>NORTHING:</u> 2000630.61 <u>EASTING:</u> 1111338.35
---	----------------------------	--------------------	-----------------------------	---

## DESCRIPTION

SOUTHEAST CORNER OF ROSEWOOD AVE. & KENMORE AVE.  
AT 1485 ROSEWOOD AVENUE



COORDINATE INFORMATION:  
HORIZONTAL COORDINATES ARE BASED ON IL STATE  
PLANE COORDINATES, EAST ZONE GRID AS  
ESTABLISHED BY GPS OBSERVATION. ELEVATIONS  
ARE BASED ON NAVD 88 OBTAINED BY DIFFERENTIAL  
LEVELING METHODS.



PREPARED BY:  
Hampton, Lenzini, and Renwick Inc.  
380 Shepard Drive  
Elgin, Illinois 60123-7010  
847-697-6700